



c-PLA2 (Ab-505) Antibody

E11-0065B

Catalog Number: E11-0065B

Concentration: 1mg/ml

Swiss-Prot No.: P47712

Other Names: CPLA2, Cytosolic phospholipase A2, EC 3.1.1.4, EC 3.1.1.5, PA24, PA24A, PLA2G4, PLA2G4A, Phosphatidylcholine 2-acylhydrolase

Storage/Stability: Store at -20°C/1 year

Form of Antibody: Rabbit IgG in phosphate buffered saline (without Mg²⁺ and Ca²⁺), pH 7.4, 150mM NaCl, 0.02% sodium azide and 50% glycerol.

Immunogen: The antiserum was produced against synthesized non-phosphopeptide derived from human c-PLA2 around the phosphorylation site of serine 505 (P-L-S^P-P-L).

Purification: The antibody was affinity-purified from

rabbit antiserum by affinity-chromatography using epitope-specific immunogen.

Specificity: c-PLA2 (Ab-505) antibody detects endogenous levels of total c-PLA2 protein.

Reactivity: Human, Mouse, Rat

Applications: WB: 1:500~1:1000 IHC: 1:50~1:100
IF: 1:100~1:500 ELISA: 1:10000

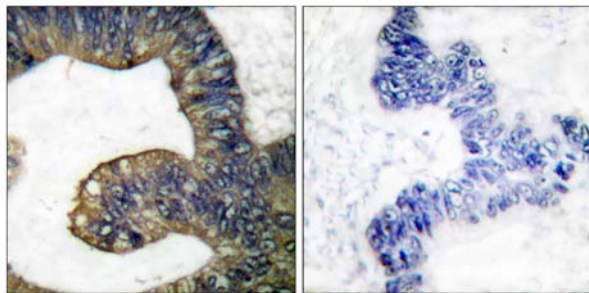
References:

D. D. Denson, J Neurophysiol, Jun 2005; 93: 3146 - 3156.

Diane M. Duffy, J. Clin. Endocrinol. Metab., Oct 2005; 90: 5858 - 5865.

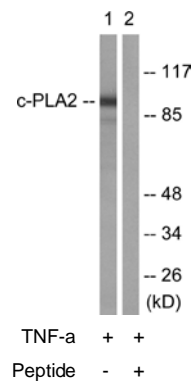
Andrei I. Ivanov, Am J Physiol Regulatory Integrative Comp Physiol, Nov 2002; 283: 1104.

Miriam Kolko, Invest. Ophthalmol. Vis. Sci., Mar 2007; 48: 1401 - 1409.



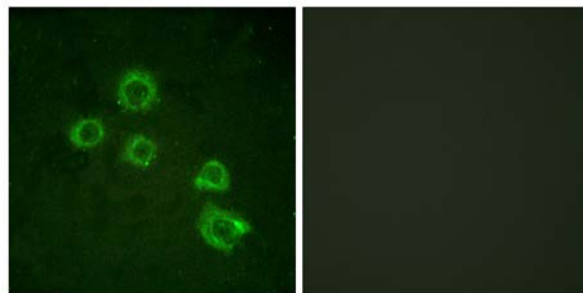
Peptide - +

Immunohistochemistry analysis of paraffin-embedded human colon carcinoma tissue using c-PLA2 (Ab-505) antibody.



Western blot analysis of extracts from HeLa cells, treated with TNF-a (20ng/ml, 30mins), using c-PLA2 (Ab-505) antibody.

For Research Use Only



Peptide - +

Immunofluorescence analysis of HuvEc cells, using
c-PLA2 (Ab-505) antibody.