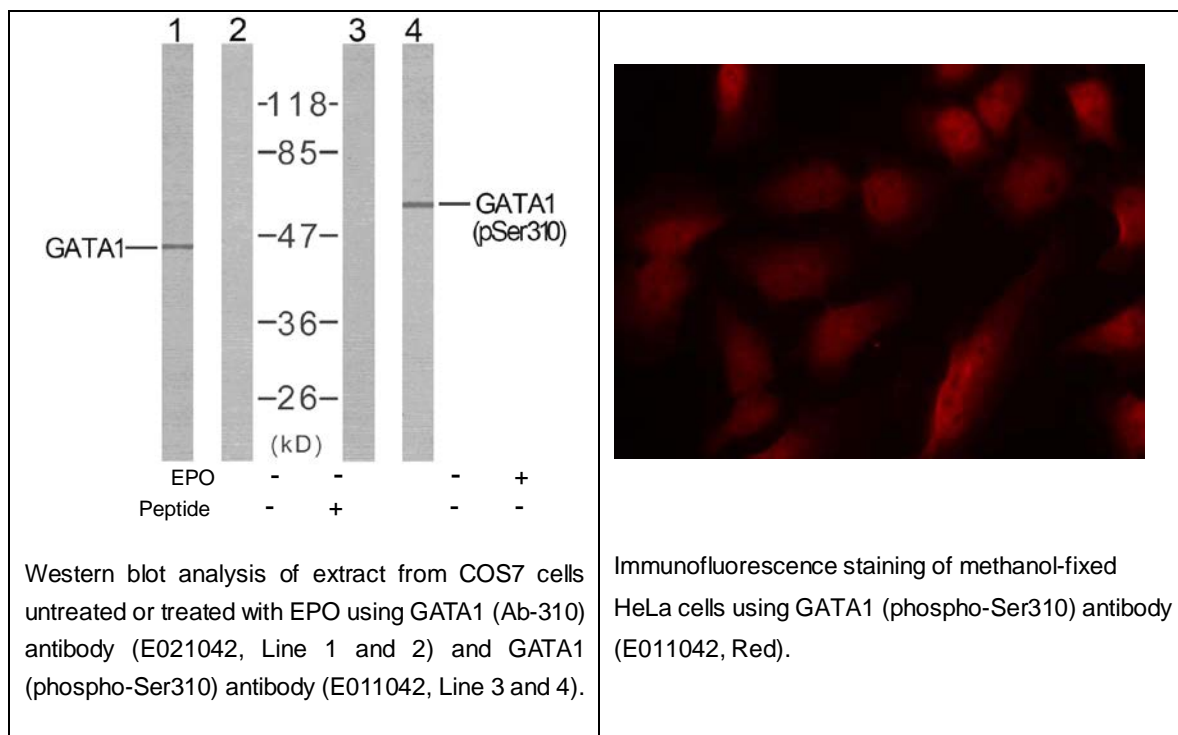




GATA1 (Phospho-Ser310) Antibody

E011042

- Catalog Number:** E011042-1, E011042-2
Amount: 50µg/50µl, 100µg/100µl
Form of Antibody: Rabbit IgG in phosphate buffered saline (without Mg²⁺ and Ca²⁺), pH 7.4, 150mM NaCl, 0.02% sodium azide and 50% glycerol.
Storage/Stability: Store at -20 °C/year
Immunogen: The antiserum was produced against synthesized phosphopeptide derived from human GATA1 around the phosphorylation site of serine 310 (K-A-S^P-G-K).
Purification: The antibody was affinity-purified from rabbit antiserum by affinity-chromatography using epitope-specific phosphopeptide. The antibody against non-phosphopeptide was removed by chromatography using non-phosphopeptide corresponding to the phosphorylation site.
Specificity/Sensitivity: GATA1 (phospho-Ser310) antibody detects endogenous levels of GATA1 only when phosphorylated at serine 310.
Reactivity: Human, Mouse, Rat
Applications: WB: 1:500~1:1000 IF:1:100~1:200
Swiss-Prot No. : P15976
References: Kadri Z, et al.(2005)Mol Cell Biol 2005 Sep; 25(17): 7412-22.



For Research Use Only