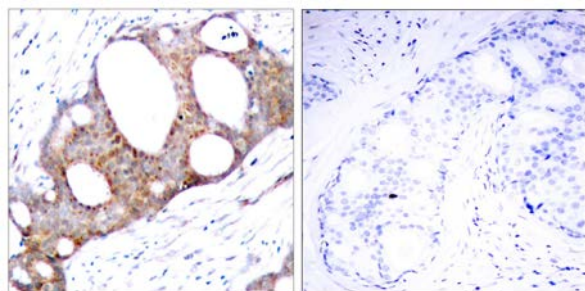




## GSK3α (Phospho-Ser21) Antibody

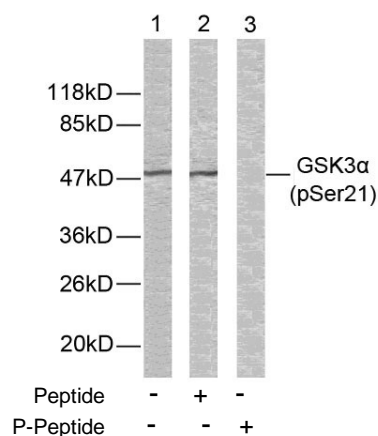
E011007

- Catalog Number:** E011007-1, E011007-2
- Amount:** 50µg/50µl, 100µg/100µl
- Form of Antibody:** Rabbit IgG in phosphate buffered saline (without Mg<sup>2+</sup> and Ca<sup>2+</sup>), pH 7.4, 150mM NaCl, 0.02% sodium azide and 50% glycerol.
- Storage/Stability:** Store at -20°C/1 year
- Immunogen:** The antiserum was produced against synthesized phosphopeptide derived from human GSK3α around the phosphorylation site of serine 21 (T-S-S<sup>P</sup>-F-A).
- Purification:** The antibody was affinity-purified from rabbit antiserum by affinity-chromatography using epitope-specific phosphopeptide. The antibody against non-phosphopeptide was removed by chromatography using non-phosphopeptide corresponding to the phosphorylation site.
- Specificity/Sensitivity:** GSK3α (phospho-Ser21) antibody detects endogenous levels of GSK3α only when phosphorylated at serine 21.
- Reactivity:** Human, Mouse, Rat
- Applications:** WB: 1:500~1:1000 IHC: 1:50~1:100 IF: 1:100-200
- Swiss-Prot No. :** P49840
- References:** Barry FA, et al. (2003) FEBS Lett. 553(1-2): 173-178.  
Koivisto L, et al. (2003) J Cell Sci. 116(Pt 18): 3749-3760.  
Welsh G I, et al. (1996) Trends Cell Biol. 6:274-279.  
Srivastava A K, et al. (1998) Mol. Cell. Biochem. 182: 135-141.



P-Peptide                    -                    +

Immunohistochemical analysis of paraffin- embedded human breast carcinoma tissue using GSK3α (phospho-Ser21) antibody (E011007).



Western blot analysis of extracts from ovary cancer cells using GSK3α (phospho-Ser21) antibody (E011007).

**For Research Use Only**