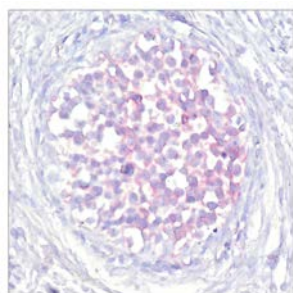




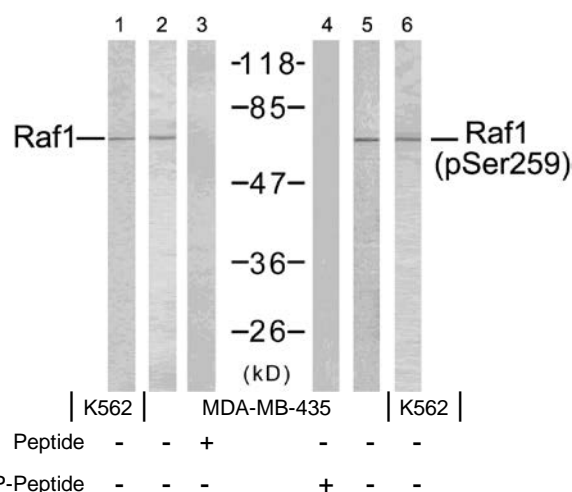
Raf-1 (Phospho-Ser259) Antibody

E011006

- Catalog Number:** E011006-1, E011006-2
- Amount:** 50µg/50µl, 100µg/100µl
- Form of Antibody:** Rabbit IgG in phosphate buffered saline (without Mg²⁺ and Ca²⁺), pH 7.4, 150mM NaCl, 0.02% sodium azide and 50% glycerol.
- Storage/Stability:** Store at -20°C/1 year
- Immunogen:** The antiserum was produced against synthesized phosphopeptide derived from human Raf-1 around the phosphorylation site of serine 259 (S-T-S^P-T-P).
- Purification:** The antibody was affinity-purified from rabbit antiserum by affinity-chromatography using epitope-specific phosphopeptide. The antibody against non-phosphopeptide was removed by chromatography using non-phosphopeptide corresponding to the phosphorylation site.
- Specificity/Sensitivity:** Raf-1 (phospho-Ser259) antibody detects endogenous levels of Raf-1 only when phosphorylated at serine 259.
- Reactivity:** Human, Mouse, Rat
- Applications:** WB: 1:500~1:1000 IHC: 1:50~1:100
- Swiss-Prot No. :** P04049
- References:** Dougherty M K, et al. (2005) Mol Cell. 17(2): 215-224.
Hekman M, et al. (2005) FEBS Lett. 579(2): 464-468.
Avruch J, et al. (1994) Trends Biochem. Sci. 19, 279-283.
Chong H, et al. (2001) EMBO J. 20, 3716-3727.
King A J, et al. (1998) Nature. 396:180-183.



Immunohistochemical analysis of paraffin-embedded human breast carcinoma tissue using Raf-1 (phospho-Ser259) antibody (E011006).



For Research Use Only